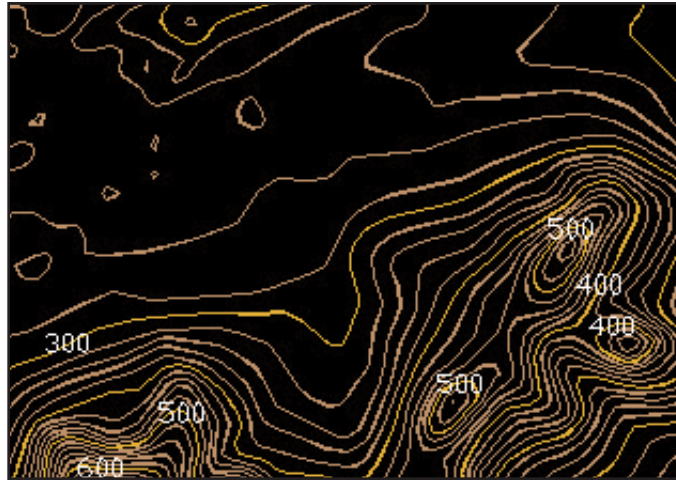


Digital Elevation Model: 1:24,000 Scale

7.5 Minute DEM
Portion of San Francisco
Contour Interval 20 feet



Available for all of the United States.
Accuracy: 90% of points \pm 10 meters.



The 1:24,000 DEM Contours (High Resolution DEM) are interpolated from raw DEM files from the U.S. Geological Survey. Map features larger than 90 meters will generally be represented. The contour lines are created from points arranged in columns aligned with the UTM grid. The distance between adjacent points is 30 meters.

A contour interval is specified when the map is ordered. The recommended interval for 1:24,000 scale data should be 40 feet for best accuracy and not less than 20 feet.

Adjacent 7.5 minute quadrangles will not share common boundary elevation points even though the maps may line up with each other. ADCi will edge-match the contours across quadrangle boundaries.

Suggested Uses

- Line of Sight (LOS) analysis
- Terrain analysis for radio and TV signal propagation
- Civil and environmental presentations
- Airport design and mining
- Flood plain analysis

Available as XYZ Points

1:24,000 points can be provided as ASCII text files for use with terrain modeling software.

Coordinate System Options

- Universal Transverse Mercator (UTM)
NAD27 meters, NAD27 feet,
NAD83 meters or NAD83 feet
- State Plane Coordinates (SPC)
NAD27 feet, NAD83 meters
or NAD83 feet
- Latitude/Longitude
- Others

ADCi Supplied Formats

- AutoCAD (.dwg)
- AutoCAD Map (.dwg)

